



Molly Shea <molly.shea@stoughton.k12.wi.us>

New Face Covering Information & Reminders for Students & Staff

Tim Onsager (Stoughton Area School District) <noreply@stoughton.k12.wi.us>

Tue, Feb 9, 2021 at 4:03 PM

Reply-To: noreply@stoughton.k12.wi.us

To: molly.shea@stoughton.k12.wi.us

02/09/2021



Stoughton Area School District

Mask Up, SASD - New Face Covering Information & Reminders

SASD students, families and staff,

Mask wearing remains imperative to preventing the spread of COVID-19 within our community and is required in all of our buildings and vehicles.

We pay close attention to Public Health Madison & Dane County (PHMDC) requirements and recommendations and want to make sure our families and staff are informed. Yesterday PHMDC further defined which masks to wear and not to wear in Emergency Order #13, which takes effect on Wednesday, February 10.

The following information is directly from Public Health Madison & Dane County and we have indicated SASD-specific information in purple.

Face Coverings Defined

A face covering...

- is defined as a piece of cloth or other material that is worn to cover the nose and mouth completely.
- must be secured to the head with ties, ear loops, or elastic bands that go behind the head and must fit snugly but comfortably against the side of the face.
- must be made with two or more layers of breathable fabric that is tightly woven (i.e., fabrics that do not let light pass through when held up to a light source).
- does not include bandanas, **ANY neck gaiters**, face shields, goggles, scarves, ski masks, balaclavas, shirt or sweater collars pulled up over the mouth and nose, or masks with slits, exhalation valves, or punctures.

Please make sure you and your children are wearing face coverings that comply with Dane County's latest order starting Wednesday, February 10. Any student or staff member wearing a face covering that does not comply with the standards above will be provided a mask for the day.

You can also reference our face covering visual below or view it here ([English](#), [Spanish](#)).

Mask Up SASD

The Dos and Don'ts of Face Coverings

DO choose masks that



Have two or more layers of washable, breathable fabric



Completely cover your nose and mouth



Fit snugly against the sides of your face and don't have gaps

DO NOT choose Masks that



Are made of fabric that makes it hard to breathe, for example, vinyl



Have exhalation valves or vents which allow virus particles to escape



Are intended for healthcare workers, including N95 respirators or surgical masks

Face Shields



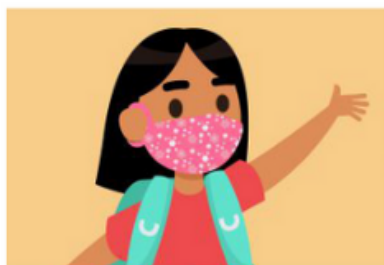
Not recommended: Evaluation of face shields is ongoing, but effectiveness is unknown at this time.

Glasses



If you wear glasses, find a mask that fits closely over your nose or one that has a nose wire to limit fogging.

Children



Find a mask that is made for children to help ensure proper fit



Check to be sure the mask fits snugly over the nose and mouth and under the chin and that there are no gaps around the sides



Do NOT put on children younger than 2 years old

Cold weather gear



Wear your scarf, ski mask or balaclava over your mask



Scarves, ski masks and balaclavas are not substitutes for masks

Do wear a mask that



- Covers your nose and mouth and secure it under your chin.
- Fits snugly against the sides of your face.

How NOT to wear a mask



Around your neck



On Your forehead



Under your nose



Only on your nose



On your chin



Dangling from one ear



On your arm



Information courtesy of the CDC

In addition, we want to provide you with Public Health's latest explanation of where and when face coverings are required and not required.

Face Coverings are required in the following scenarios:

Every individual ages five (5) and up, **and our SASD 3K and 4K students**, shall wear a face covering when:

- In any enclosed building where other people, except for members of the person's own household or living unit are present.
- In line to enter any enclosed building.
- Driving or riding in any vehicle where other people, except for members of the person's own household or living unit are present.
- Outdoors at a restaurant or tavern.
- Outdoors while actively participating in sports, including drills, practices, scrimmages, games, and competitions.
- Outdoors while attending a Gathering of more than fifty (50) individuals.

Exceptions to the face coverings requirements:

Individuals who are otherwise required to wear a face covering may remove the face covering in the following situations:

- While eating or drinking.
- When communicating with an individual who is deaf or hard of hearing and communication cannot be achieved through other means.
- While obtaining a service that requires the temporary removal of the face covering, such as dental services.
- While sleeping.
- While swimming or on duty as a lifeguard.
- When engaging in work where wearing a face covering would create a risk to the individual, as determined by government safety guidelines.
- When necessary to confirm the individual's identity, including when entering a financial institution.

- viii. When federal or state law or regulations prohibit wearing a face covering.
- ix. Outdoors while actively participating in sports that are played individually or played with six (6) feet physical distancing at all times.

Exemptions from face covering requirements:

The following individuals are exempt from the face covering requirement in Section 1.a. of this Order:

- i. Children under the age of 5. -- **At SASD, we also require our 3K and 4K students to wear masks.**
- ii. Individuals who are unconscious, incapacitated, or otherwise unable to remove the face covering without assistance.
- iii. Individuals with medical conditions, intellectual or developmental disabilities, mental health conditions, or other sensory sensitivities that prevent the individual from wearing a face covering.
- iv. There may be exemptions that are HR-approved under the ADA.

Thank you for your continued cooperation.

Together,

Dr. Tim Onsager, District Administrator

320 North Street, Stoughton, WI 53589

(608) 877-5000

stoughton.k12.wi.us



Stoughton Area School District would like to continue connecting with you via email. If you prefer to be removed from our list, please contact Stoughton Area School District directly. To stop receiving all email messages distributed through our SchoolMessenger service, follow this link and confirm: [Unsubscribe](#)

SchoolMessenger is a notification service used by the nation's leading school systems to connect with parents, students and staff through voice, SMS text, email, and social media.