

ENROLLMENT PROJECTIONS

Stoughton Area School District

Sarah Kemp, Researcher
Applied Population Laboratory
University of Wisconsin-Madison

Phone: 608-265-6189

E-mail: kemp@wisc.edu



Enrollment Projections Process

☐ Past Projections

- ✓ How do the projections compare to current enrollment?

☐ Background

- ✓ What data is required for the projections?

☐ Methodology

- ✓ What method and models are used to project students?

☐ Projections

- ✓ How many students should the district expect?



Past Projections: Percent Error

4K-12 Enrollment		
School Year	2020-21	2019-20
Baseline	4.8%	1.5%
5 Year Trend	5.1%	1.6%
2 Year "Trend"	3.9%	1.0%
Kindergarten	5.9%	1.9%

6-8 Enrollment		
School Year	2020-21	2019-20
Baseline	5.5%	2.6%
5 Year Trend	4.0%	1.9%
2 Year "Trend"	-1.2%	-0.4%
Kindergarten	3.6%	1.9%

K-5 Enrollment		
School Year	2020-21	2019-20
Baseline	7.2%	1.3%
5 Year Trend	6.3%	0.9%
2 Year "Trend"	4.7%	-0.2%
Kindergarten	8.3%	1.6%

9-12 Enrollment		
School Year	2020-21	2019-20
Baseline	0.4%	0.2%
5 Year Trend	3.6%	1.6%
2 Year "Trend"	5.2%	2.6%
Kindergarten	3.6%	1.6%

- Overall, Two-Year “Trend” projection model was the most reliable.
- Models over-projected the current school year in elementary school.
- Middle school projections under projected enrollment.
- High school projections were off by only a few students (Baseline).

Enrollment Projections Process

□ Background

- ✓ How is district enrollment changing?
- ✓ Is the kindergarten population continuing to decline?
- ✓ How have birth rates changed over time?
- ✓ What are the trends in the general population?
- ✓ What are the housing development trends?



Figure 1-A

Stoughton Area School District Student Enrollment

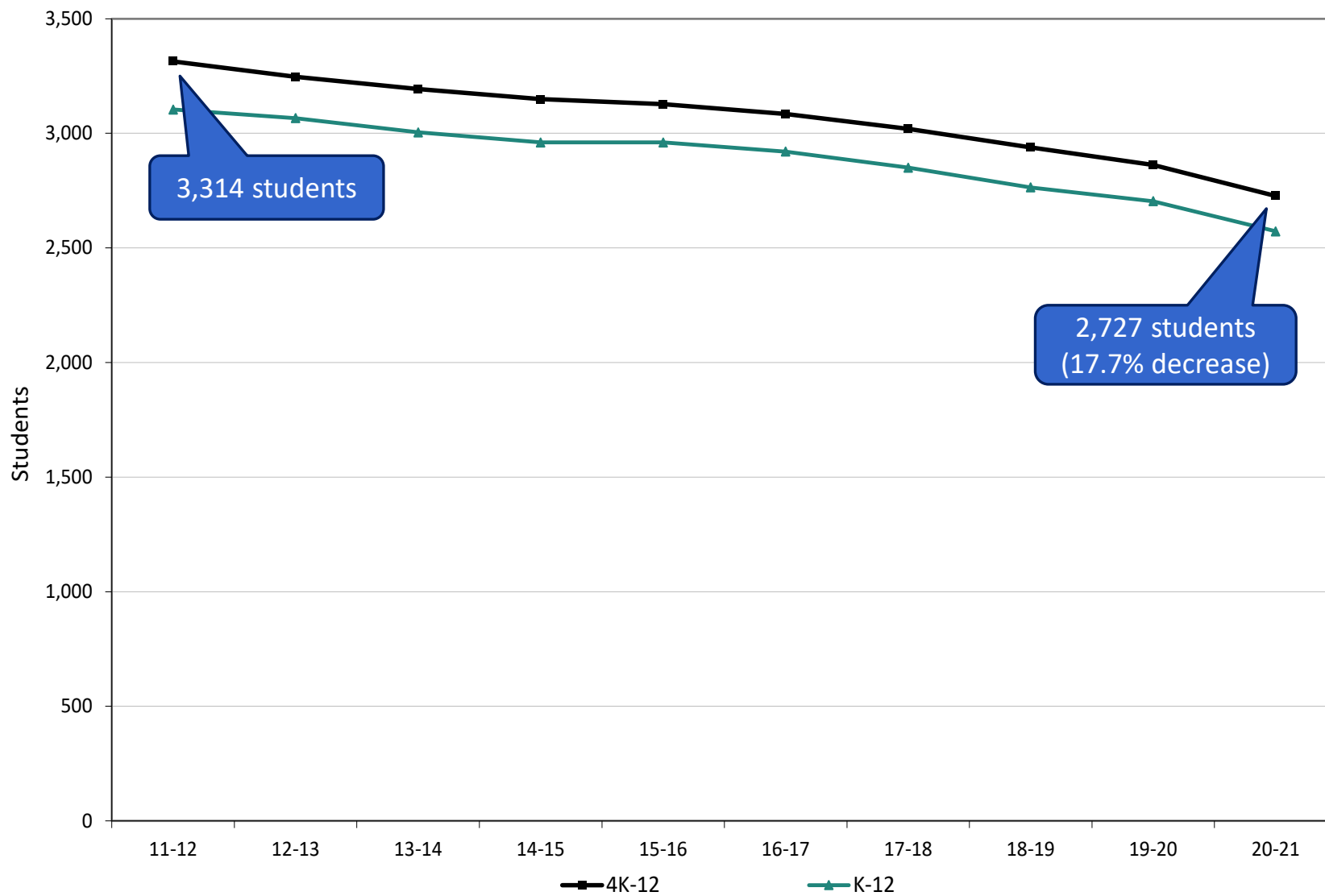


Figure 1-B

Stoughton Area School District Enrollment by Grade Grouping

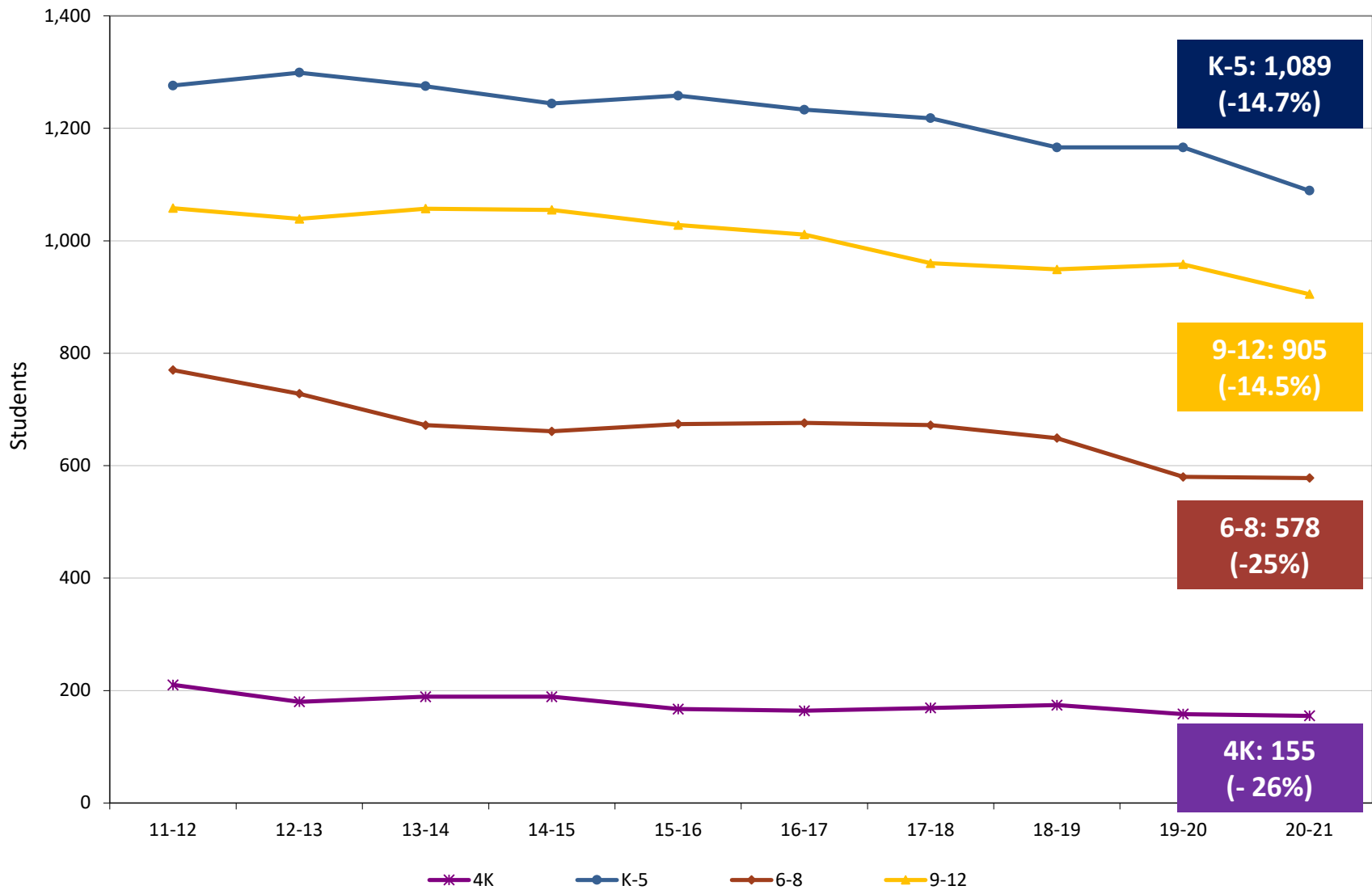


Figure 2-A

Stoughton Area School District Kindergarten Enrollment

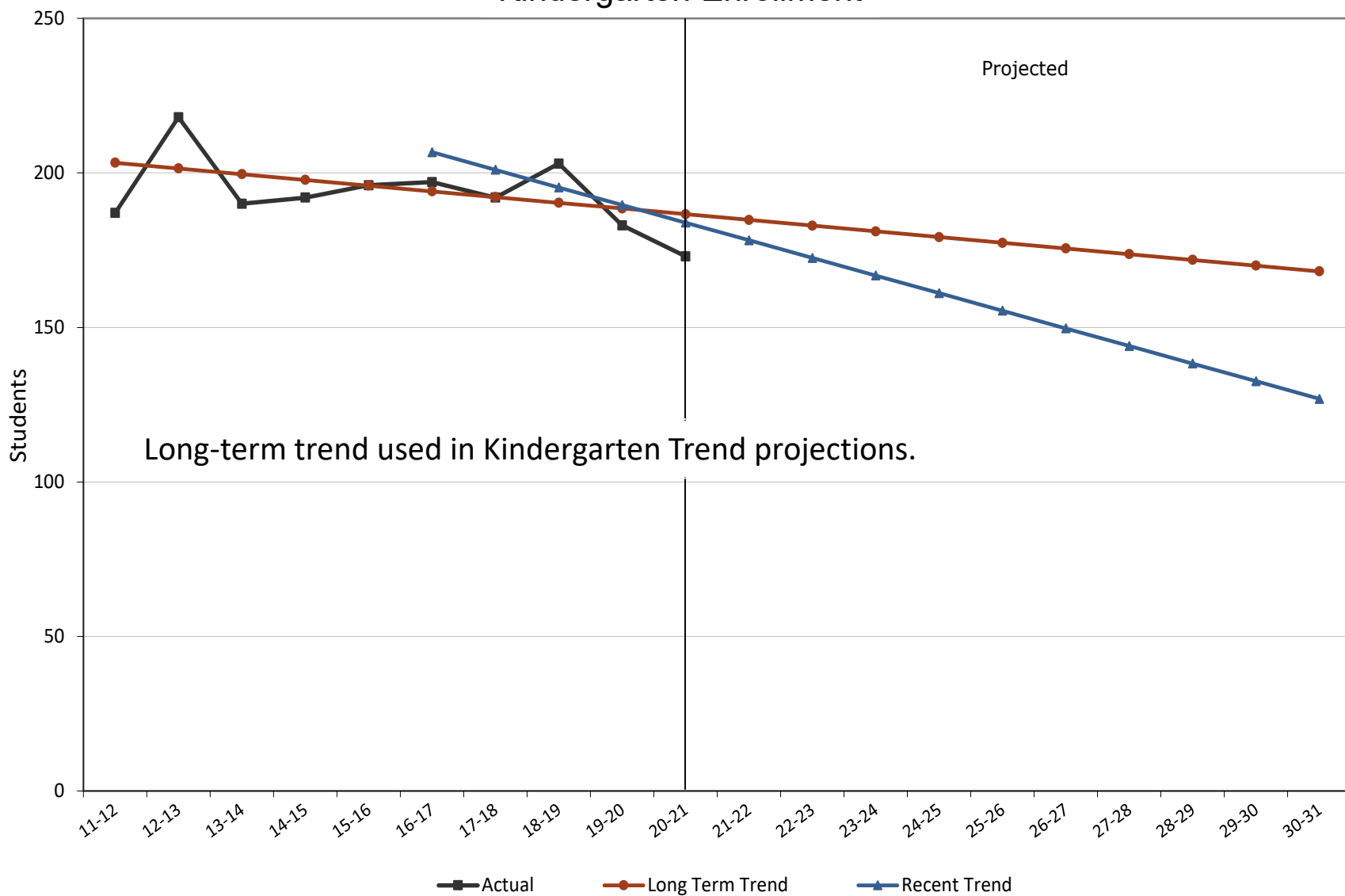


Figure 3

Stoughton Area School District Area Births

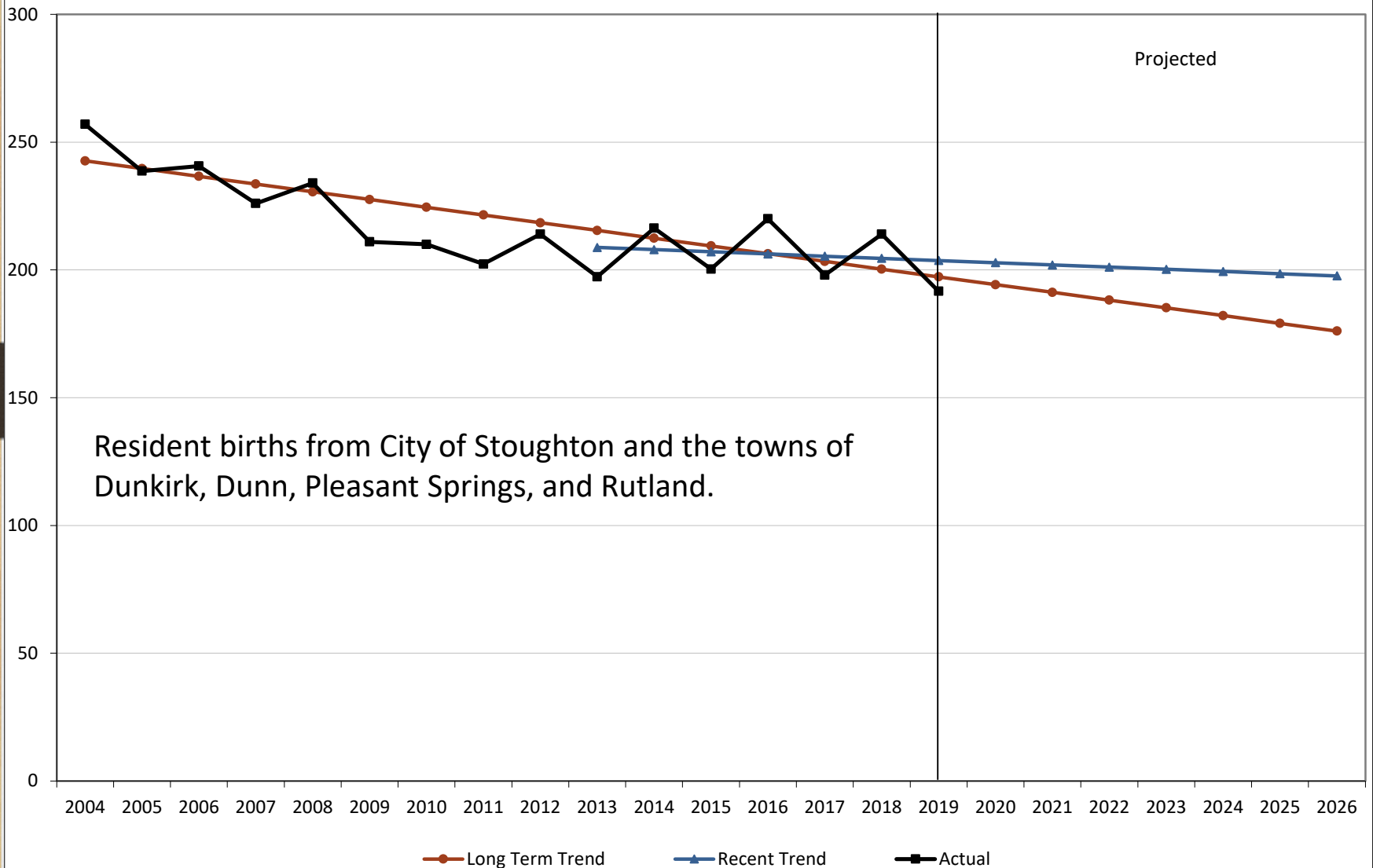


Figure 4

Stoughton Area School District 2010-2018 Age Structure

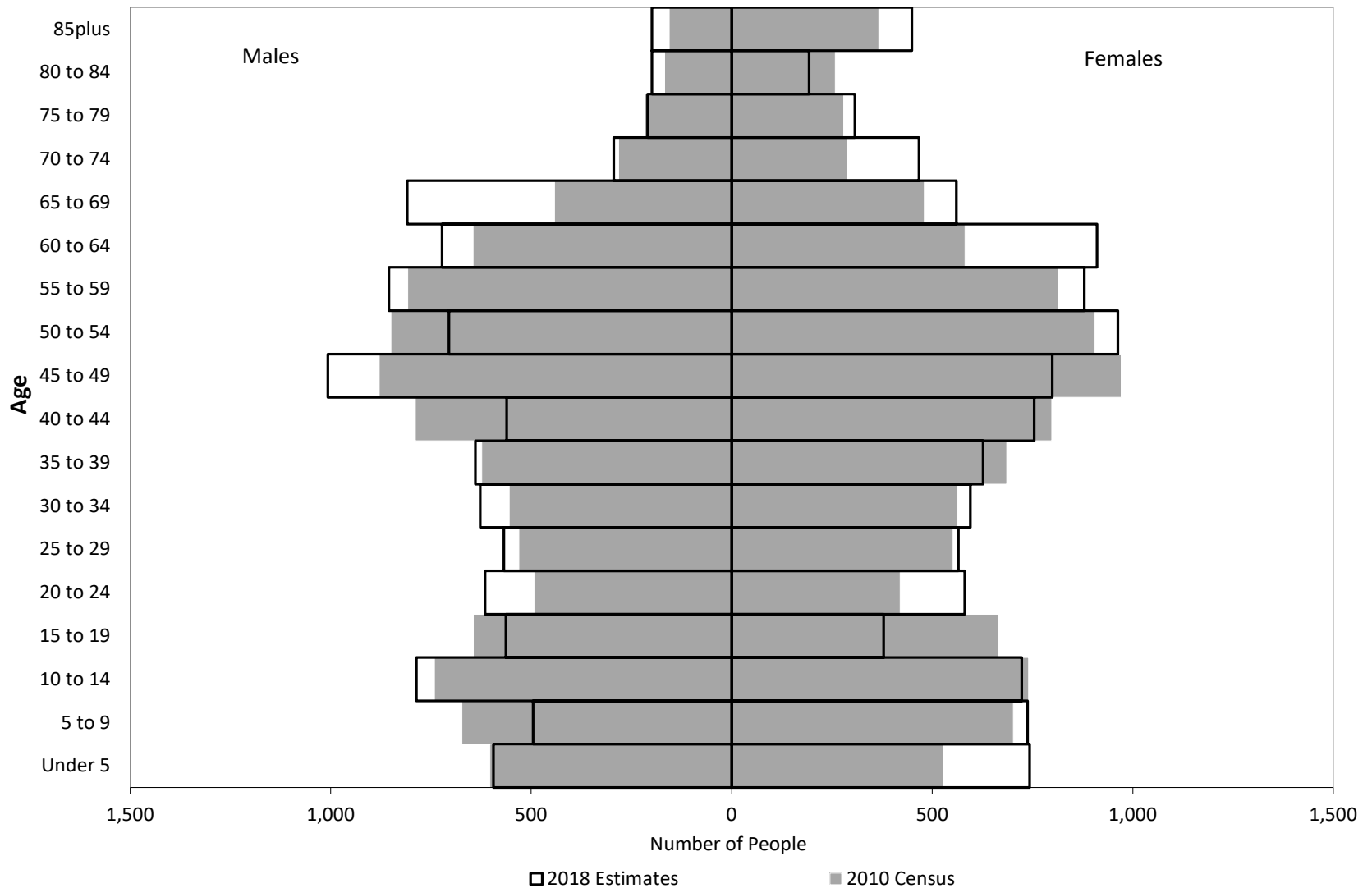


Figure 5-A

Stoughton Area School District New Housing by Municipality

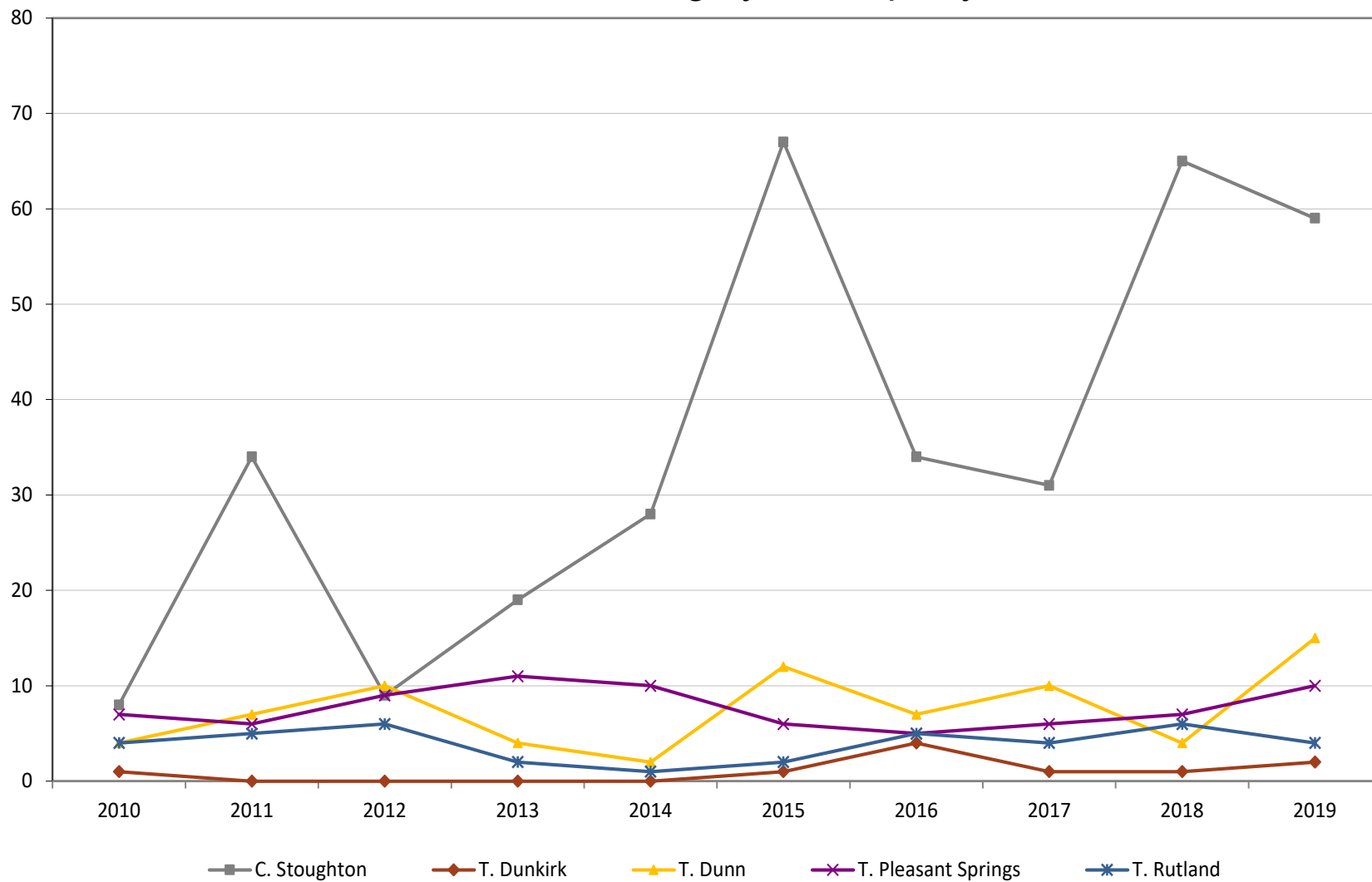
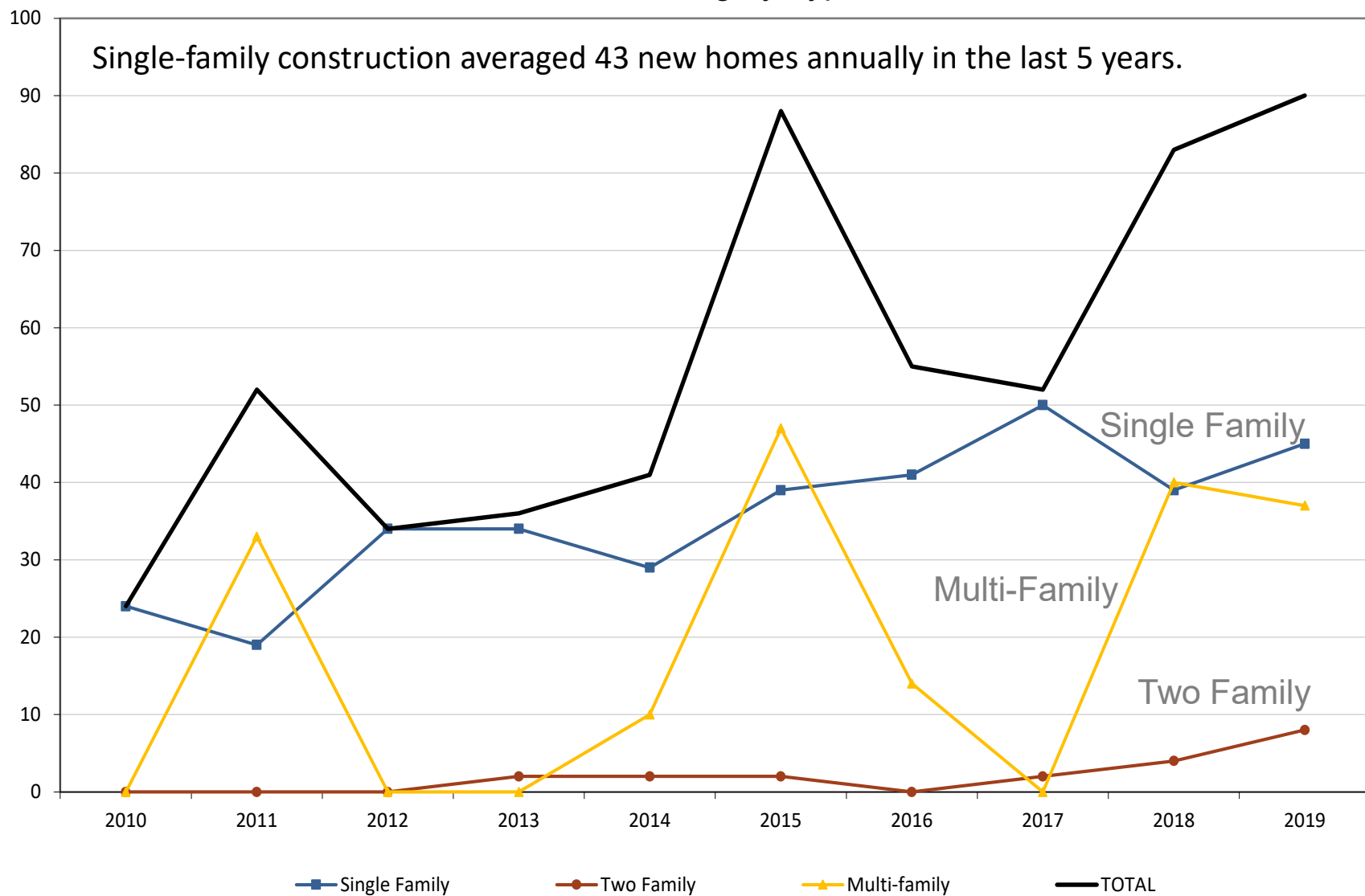


Figure 5-B

Stoughton Area School District New Housing by Type



Enrollment Projections Process

❑ Methodology

- ✓ What method does APL use to project students?
- ✓ What projection models are provided?



Grade Progression Ratio Method

TABLE 6
Grade Progression Ratios
Stoughton Area School District

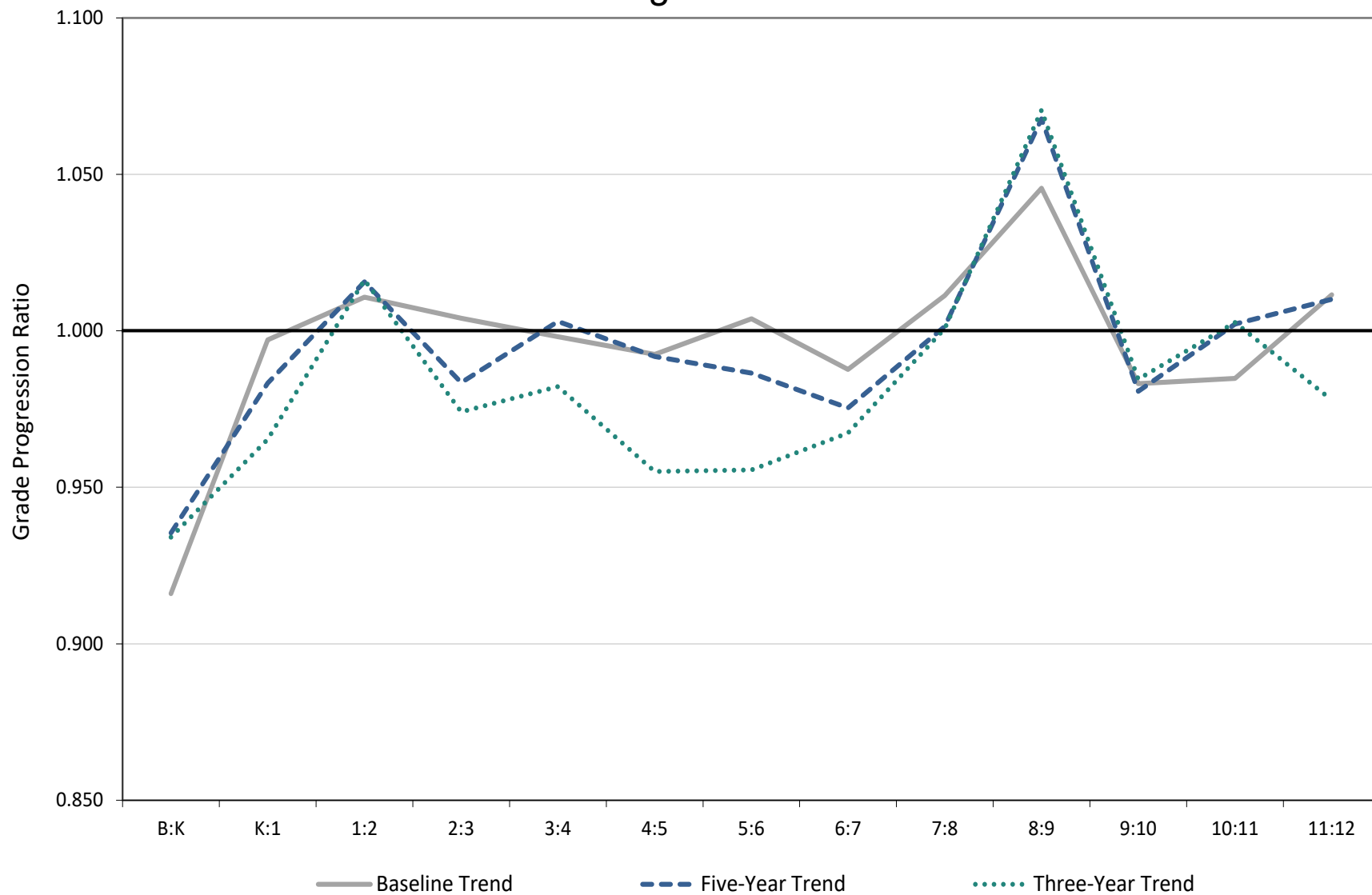
YEAR CHANGES	B:K	K:1	1:2	2:3	3:4	4:5	5:6	6:7	7:8	8:9	9:10	10:11	11:12
11-12/12-13	0.908	1.005	1.043	1.023	1.010	1.000	1.023	0.987	1.025	1.000	0.966	0.965	1.011
12-13/13-14	0.823	0.995	1.016	1.012	0.991	1.014	1.009	1.018	1.009	1.014	0.989	0.984	1.028
13-14/14-15	0.830	1.011	0.986	1.010	0.967	0.973	0.990	1.018	1.023	1.105	0.990	0.996	1.028
14-15/15-16	0.896	1.057	1.047	1.037	1.026	1.004	1.046	1.000	1.062	1.035	1.016	0.986	0.985
15-16/16-17	0.937	1.000	1.015	0.980	1.023	1.061	1.021	0.991	1.005	1.013	0.974	0.977	1.028
16-17/17-18	0.937	1.020	1.015	1.015	0.985	0.982	0.995	0.984	1.000	1.115	0.975	1.026	1.020
17-18/18-19	0.966	0.948	1.005	0.935	1.005	0.943	0.946	0.938	1.013	1.076	0.970	1.042	1.000
18-19/19-20	0.902	0.975	1.027	1.020	1.000	0.981	0.984	0.981	0.985	1.037	0.992	0.987	0.992
19-20/20-21	0.824	0.973	0.949	0.968	0.942	0.941	0.937	0.983	1.005	1.098	0.992	0.979	0.942
Baseline	0.916	0.997	1.011	1.004	0.998	0.993	1.004	0.988	1.011	1.046	0.983	0.985	1.012
Five-Year Trend	0.935	0.983	1.016	0.983	1.003	0.992	0.987	0.975	1.001	1.068	0.981	1.002	1.010
Three-Year Trend	0.934	0.965	1.016	0.974	0.982	0.955	0.956	0.967	1.001	1.071	0.985	1.003	0.978

*Shaded progression ratios are excluded from the Baseline Average

- Average ratios (10, 5, & 3 year) determined for each projection model.
- 19-20/20-21 low GPRs are excluded from the 5-year and 3-year trends.
- 5-Year Trend: 2020 kindergartners x .983 = 2021 first graders

Figure 6

Stoughton Area School District Grade Progression Ratios



4K Grade Progression Ratio (GPR)

TABLE 7
4K Grade Progression Ratios
Stoughton Area School District

	B:4K	4K:K
11-12/12-13	0.780	1.038
12-13/13-14	0.817	1.056
13-14/14-15	0.864	1.016
14-15/15-16	0.794	1.037
15-16/16-17	0.800	1.180
16-17/17-18	0.804	1.171
17-18/18-19	0.858	1.201
18-19/19-20	0.752	1.052
19-20/20-21	0.754	1.095
Baseline	0.809	1.094
Five-Year Trend	0.804	1.140
Three-Year Trend	0.805	1.116

*Shaded progression ratios are excluded

- ❑ 80.4 - 81% of births in the district entered 4K.
- ❑ 10-year GPRs used for Baseline model.
- ❑ 5-year GPRs used for Five-Year kindergarten trend models.
- ❑ 3-year GPRs used for Three-Year trend model.

Projection Models

- **Baseline:** 10-year grade progression ratios
(long-term birth trends to project kindergarten)
- **Five-Year Trend:** 5-year grade progression ratios
(recent birth trends to project kindergarten)
- **Three-Year Trend:** 3-year grade progression ratios
(recent birth trends to project kindergarten)
- **Kindergarten Trend:** 5-year grade progression ratios for
grades 1st-12th (long-term K trends to project kindergarten)

Enrollment Projections Process

❑ Enrollment Projections

- ✓ How many students can the district expect?
- ✓ How projections were modified to address COVID?



Figure 7

Stoughton Area School District District-wide Projections

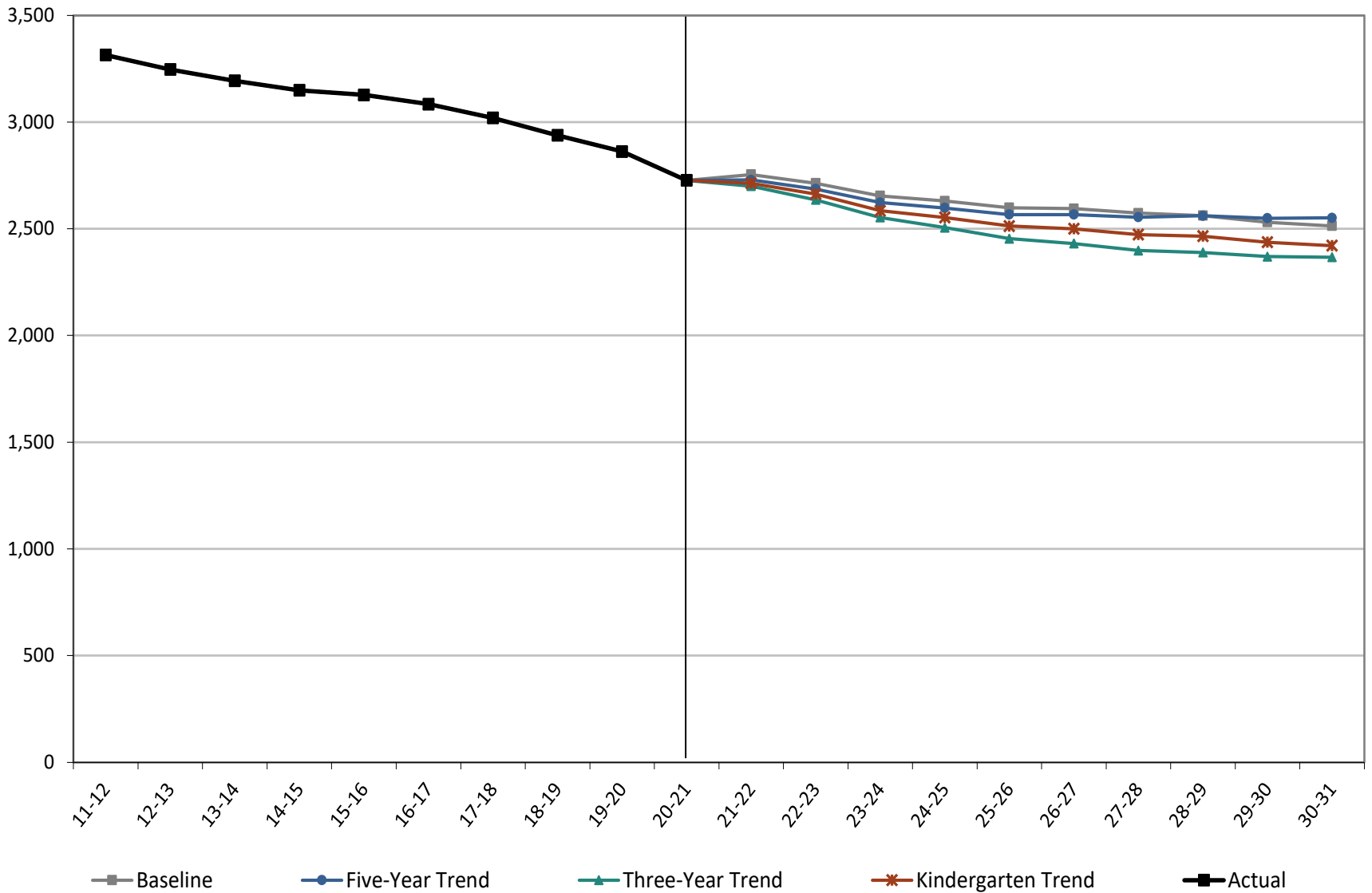


Figure 9

Stoughton Area School District Elementary School Projections

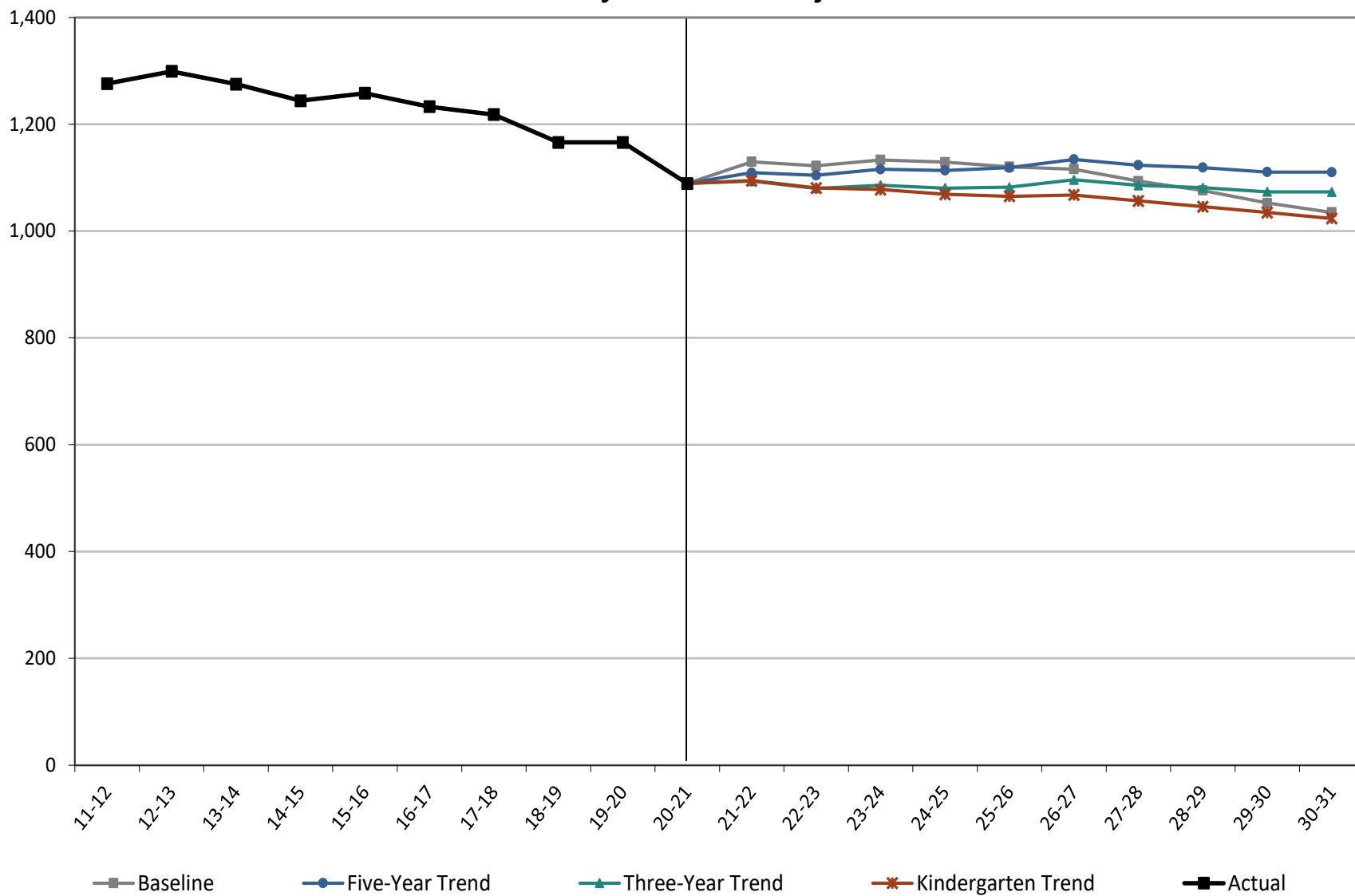


Figure 10

Stoughton Area School District Middle School Projections

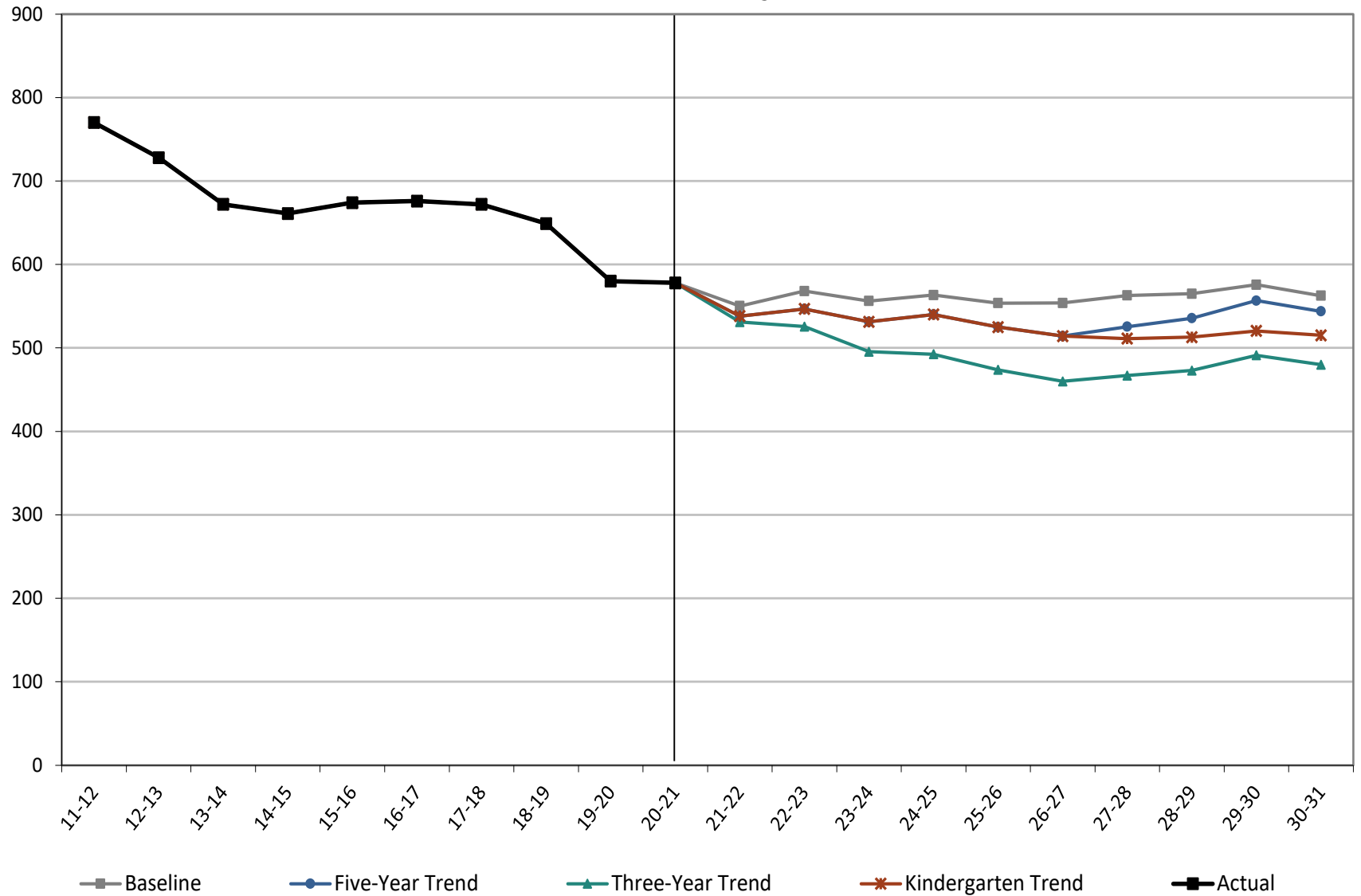
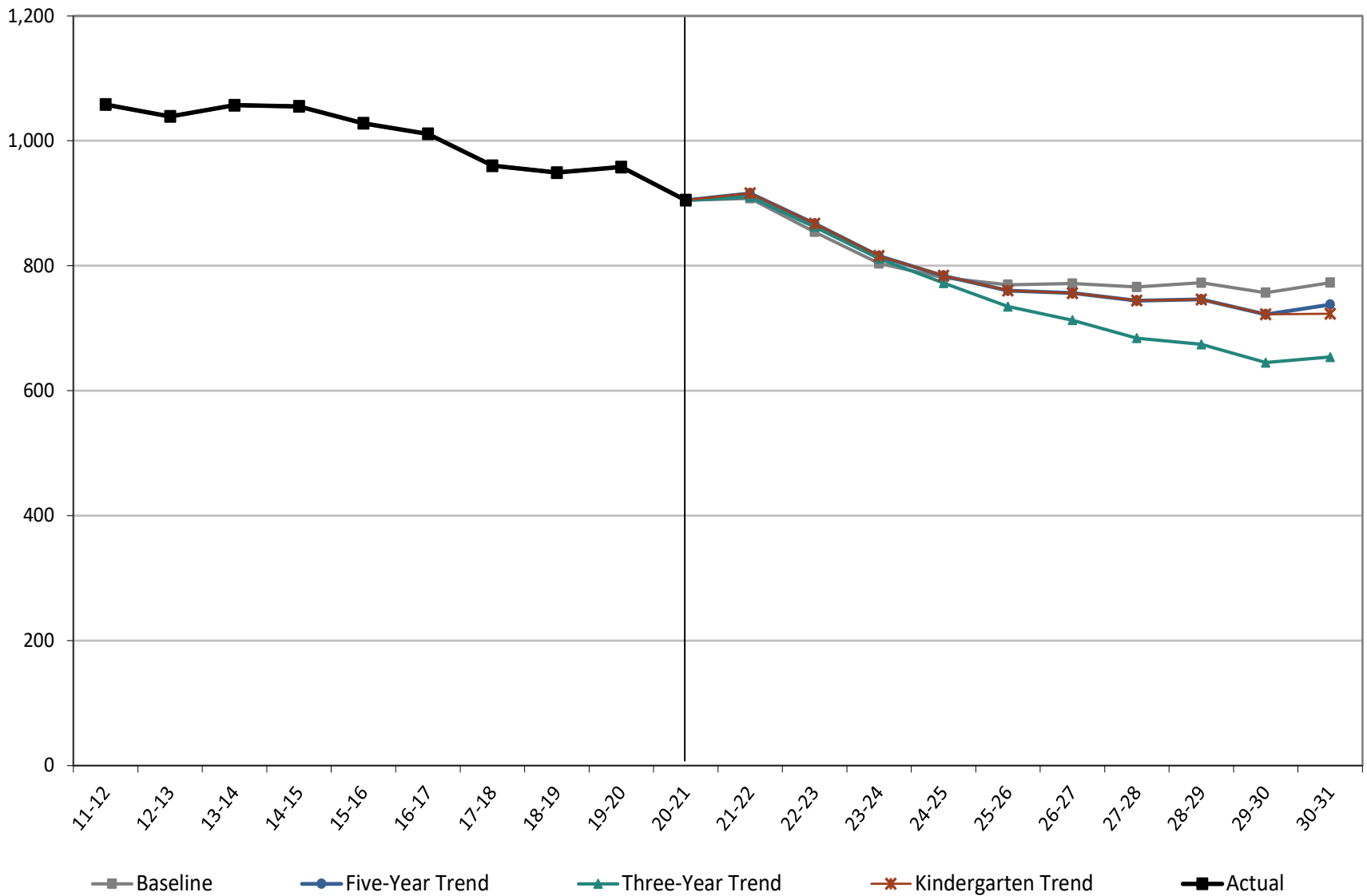


Figure 11

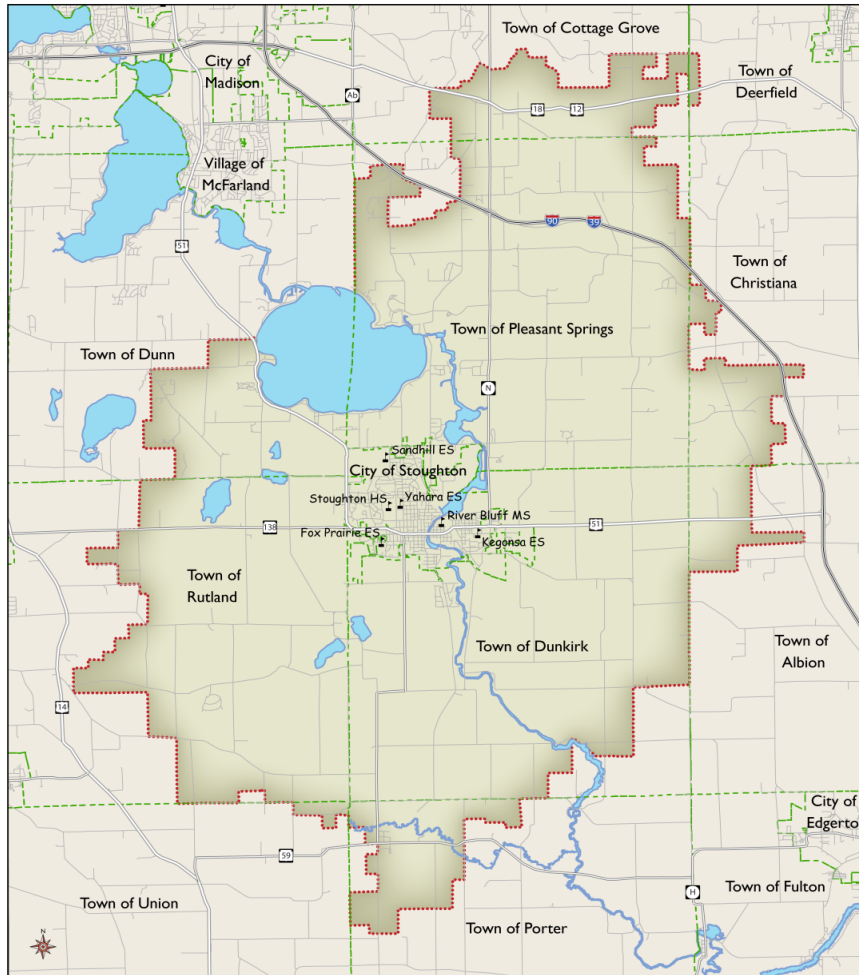
Stoughton Area School District High School Projections



Future Trends

Models show decreasing enrollment and over the next five years:

- ❖ Districtwide enrollment will likely decrease by 128 to 274 students, averaging a 7% decline.
- ❖ Grades K-5 are projected to decrease by 24 students or increase by 31 students, averaging a 0.7% growth.
- ❖ Grades 6-8 are projected to decrease by 24 to 104 students, averaging a 10% decrease.
- ❖ Grades 10-12 are projected to decrease by 136 to 170 students, averaging a 16.5% decline.



Stoughton Area School District

- ▲ Stoughton Area Schools
- Municipalities
- - - School District
- Water

0 0.5 1 Miles

Prepared by the Applied Population Laboratory
 University of Wisconsin-Madison
 Department of Community & Environmental Sociology

Thank You!

Sarah Kemp
 Applied Population Laboratory
 University of Wisconsin-Madison
 Phone: 608-265-6189
 E-mail: kemp@wisc.edu

